

# HARLEQUIN

INDOOR | OUTDOOR



DIGITAL DESIGN BOOK

# HARLEQUIN

## INDOOR | OUTDOOR

Harlequin's expressive collection of outdoor printed fabrics and weaves has been designed by the studio, considering varied lifestyles, with luxury, a sense of individuality and a fluidity of design inside and outside the home.

Palm prints and large-scale designs celebrate expressing personalities through colour and design. Harlequin's outdoor collection of printed fabrics reflects global design influences, always connected to the natural world, bringing concepts to life through striking colour.

Checked weaves, boucle textures, and bold colours combine for a unique and performance-driven collection of indoor/outdoor weaves for SS24.

Woven from recycled fibres, Indoor/Outdoor Weaves are a first for Harlequin; produced from textile waste, the fibres used have been specially developed to create sustainable furnishing fabrics, with zero water consumption used during production. The finished weave is coated in a Carbon Zero (C0) finish, a water and stain-resistant finish that provides a high level of stain and water repellency.

Designed to bring the textures of home outdoors, Harlequin's astoundingly woven, vibrantly coloured weaves reflect the brand's love of expressive colour with the tactile quality of woven fabric. Earthy, natural tones ground the collection and create a versatile and textural palette with pops of brighter colours in the mix for every home mood. A multisensory experience for outdoor living comes to the fore.

Harlequin's Indoor/Outdoor printed and woven fabrics have been treated individually to protect from the spills and stains of everyday life and cope with the changing seasons of outdoor environments.



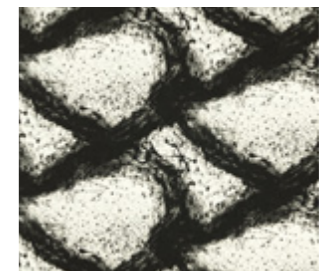


## MINI MELODIC

In a mini scale, Mini Melodic is easy to use outdoors, with a multidirectional pattern that feels artistic yet simple in the two-tone colour options. Hand-painted and printed on cotton/linen, Mini Melodic flows with its own melody.



MINI MELODIC | 121218



ENGIMATIC | 121217



SKIVA | 121230

## ALVARO

Reminiscent of palm trees gently swaying in a soft summer breeze, Alvaro is a lovely painterly design. A fresh ground contrasts beautifully with the subtle highlight tones of layered leaves, opening up a decorating story for outdoor.



ALVARO | 121234



ALTAN | 134126



UTTO | 121223





## HITO

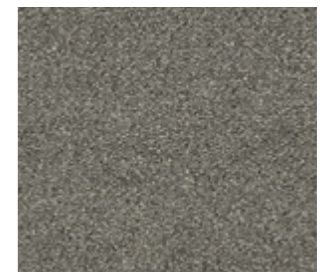
A bouclé with a checkerboard effect, Hito carries a strié effect on the ground. A lovely coordinate, the colourways range from bright, fruity tones to soft, mineral hues, with a neutral Chalk thread harmonising the fabric, which is made from recycled fibres specially developed to create sustainable furnishing fabrics. The finished weave is coated in a Carbon Zero (C0) finish, a water- and stain-resistant finish that provides a high level of stain and water repellency.



HITO | 134118



ELIO | 134104



ELIO | 134112

# FABRIC INDEX



ACROPORA | 121052



ALOUTAU | 121215



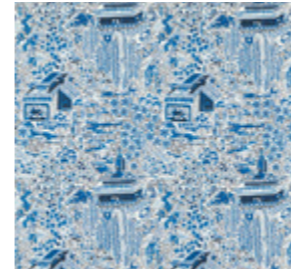
ALVARO | 121050



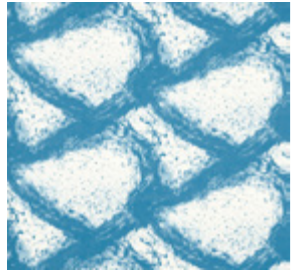
ALVARO | 121219



ALVARO | 121234



EDO | 121057



ENIGMATIC | 121216



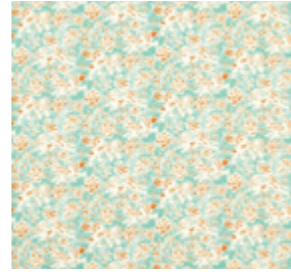
ENIGMATIC | 121217



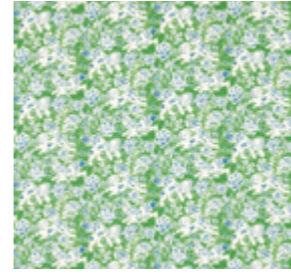
FLOREANA | 121233



KELAPA | 121047



KOYA | 121224



KOYA | 121225



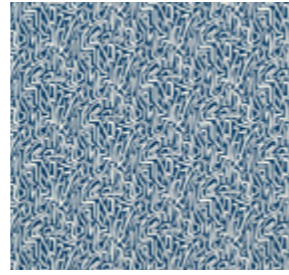
MELORA | 121214



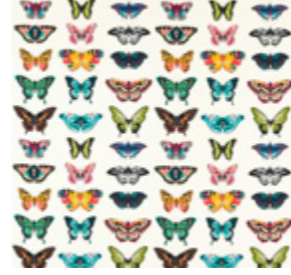
MELORA | 121235



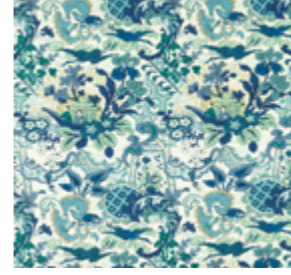
MINI MELODIC | 121218



MINI MELODIC | 121221



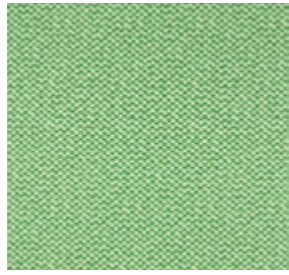
PAPILIO | 121051



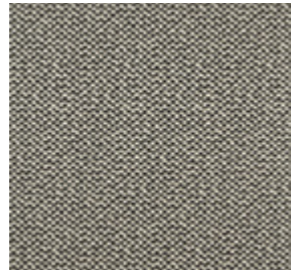
SHENLONG | 121054



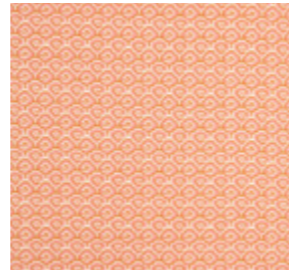
SHENLONG | 121055



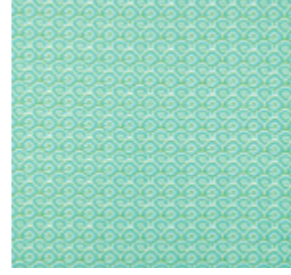
SKIVA | 121229



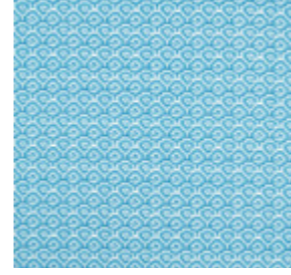
SKIVA | 121230



SORA | 121226



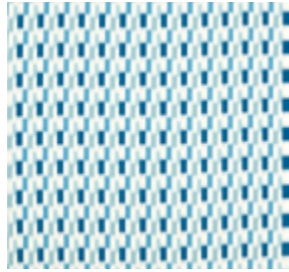
SORA | 121227



SORA | 121228



UTTO | 121220



UTTO | 121222



UTTO | 121223



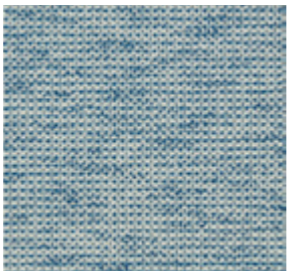
# WEAVES INDEX



AELIUS | 134119



AELIUS | 134120



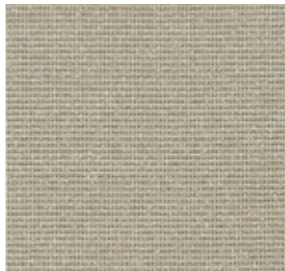
AELIUS | 134121



ALTAN | 134124



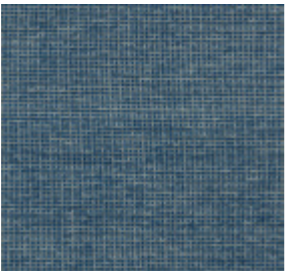
ALTAN | 134125



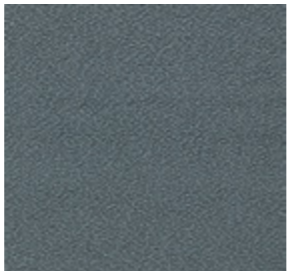
ALTAN | 134126



DAI | 134122



DAI | 134123



ELIO | 134099



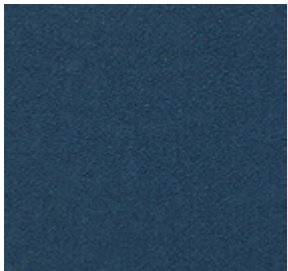
ELIO | 134100



ELIO | 134101



ELIO | 134102



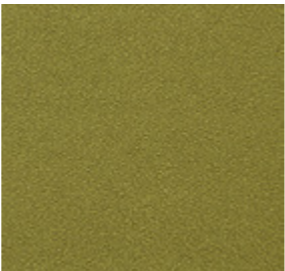
ELIO | 134103



ELIO | 134104



ELIO | 134105



ELIO | 134106



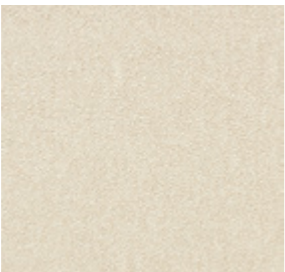
ELIO | 134107



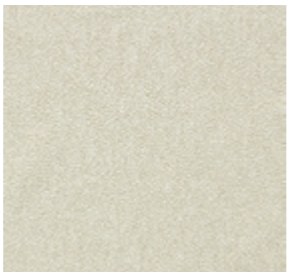
ELIO | 134108



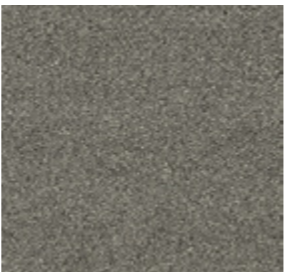
ELIO | 134109



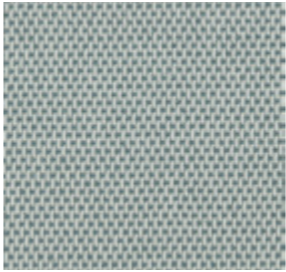
ELIO | 134110



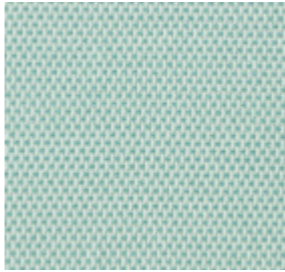
ELIO | 134111



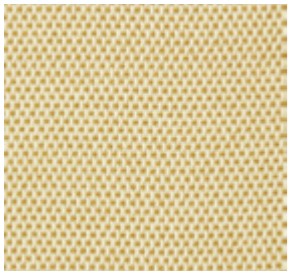
ELIO | 134112



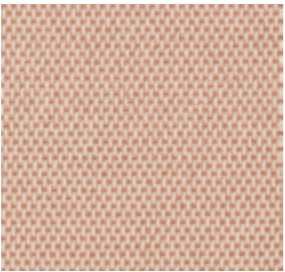
HITO | 134113



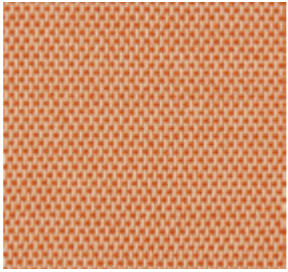
HITO | 134114



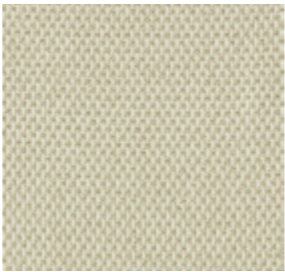
HITO | 134115



HITO | 134116



HITO | 134117



HITO | 134118





## CONTACT DETAILS

### LONDON SHOWROOM

Design Centre Chelsea Harbour, First Floor,  
South Dome, Lots Road, London, SW10 0XE

Tel: + 44 203 903 3700

[showroom@sandersondesigngroup.com](mailto:showroom@sandersondesigngroup.com)

### PARIS SHOWROOM

19 Rue Du Mail 75002 Paris, France

Tel: +44 (0)203 093 1840

### NEW YORK SHOWROOM

D&D Building, 979 Third Avenue,  
Suite 905, New York, NY 10022

Tel +1 212 319 7220

[sales-ny@sandersondesigngroup.com](mailto:sales-ny@sandersondesigngroup.com)

### CHICAGO SHOWROOM

222 W Merchandise Mart Plaza,  
Suite 6-117A, Chicago, IL 60654

Tel +1 312 929 2058

[sales-chicago@sandersondesigngroup.com](mailto:sales-chicago@sandersondesigngroup.com)

### NETHERLANDS SHOWROOM

ETC Licht & Interieur, Randweg 20,  
4104 AC Culemborg

Tel: +31 65349 3696

[international@sandersondesigngroup.com](mailto:international@sandersondesigngroup.com)

### GERMANY SHOWROOM

Kronenstrasse 4, 76133 Karlsruhe

Tel: +49 721 981 985 60

[verkauf@sandersondesigngroup.com](mailto:verkauf@sandersondesigngroup.com)

[@harlequinfw](https://www.harlequinfw.com) | [harlequin.sandersondesigngroup.com](https://www.harlequin.sandersondesigngroup.com)